



MOST™ Network Configuration Manager

Overview

MOST Network Configuration Manager allows carriers to automate and optimize the process of network switch update. This product improves the speed and accuracy of updating the routing tables delivering tangible cash savings based on faster routing cycle times.

MOST Network Configuration Manager is part of a modular software suite that covers the entire Wholesale process from Buy rates, Quality and Traffic management, Routing decisions and Sell rates.

MOST Network Configuration Manager Delivers

Typically each type of switch requires a different configuration process with different interfaces and format requirements. In any switch environment, manual update and configuration is a very time consuming process, subject to error, with the result of long elapsed times between routing changes. Errors introduced into the switch update process results in the wrong traffic routing leading to substantial unexpected cost. With the increasing frequency of switch updates required to meet the business dynamics for carriers, the time taken to configure, update and provision revised routing plans is a major business issue and frequently prevents carriers taking advantage of new/improved routing opportunities.

The benefits delivered by MOST Network Configuration Manager include:

Faster routing updates brings bottom line savings

Utilizing MOST Network Configuration Manager, a total switch update can be performed in a matter of minutes. All negotiated rate reductions can become immediately effective and not in the industry average 10 to 20 days, generating increased margins of over 10%. Scheduled updates allow routing changes to be applied during out-of-hours, weekends, public holidays to ensure that the cost saving routing is always applied.

'Single Step' switch update and Configuration

Switch specific interfaces provides the ability to drive multiple switches in parallel. A core Man Machine Language (MML) generator is enhanced with a full 2-way interface allowing multiple switch interrogation and simultaneously routing changes.

Multi-vendor Support

Support for a wide range of different TDM and IP switch types, including Nortel, Siemens, Ericsson, Nokia, Huawei, NEC & Lucent.

Seamless migration from TDM to IP switches

Both TDM & VoIP technologies are supported seamlessly allowing for dual-operation allowing a rapid and low risk migration to VoIP.

Easy and Precise Configuration

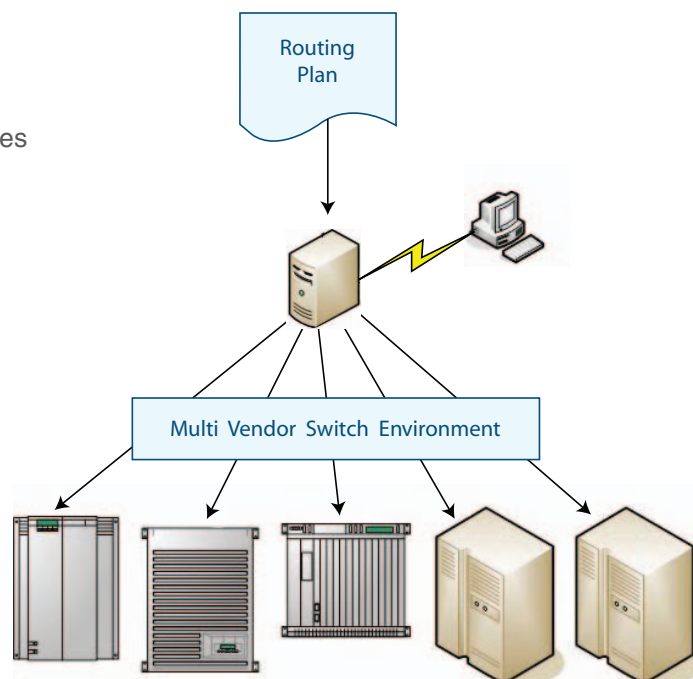
Routing tables can be easily viewed with a simple-to-use GUI which allows manual updates or configuration of a full network update and roll back.

Reduced Switch Errors and Audit Trail

Automating Switch updates and configuration reduces the number of switch errors through full error handling which protects against network loopbacks and 'tromboning' between switches.

Product Features

- Automatic Upload of routing plans
- Network Loopback prevention
- Multiple Switch Time Periods (STP) & Multiple routing tables
- Temporary Alternative Routing (TAR) feature
- Rollback Management
- Scheduled updates for out of hours uploads
- Back up plan – Full Switch back up
- Email Functionality
- Carrier Translation data
- Event Logs
- Simultaneous update of multiple and multi-vendor switch types
- Support for Nortel, Siemens, Ericsson, NEC, Nokia, Huawei & Lucent switches



MOST Network Configuration Manager Deployment

Multiple Delivery Options

MOST Network Configuration Manager can be uniquely delivered in a number of options

- **'On Demand'** in a secure managed 24*7 operation with zero operational impact
- **Installed** with small footprint and low operational impact
- **Managed Service** including all Data management

Historically, companies were required to buy, build, and maintain their own IT infrastructures despite exponential costs. On-demand computing gives companies an alternative. Now they can use applications built and run on a world-class infrastructure and delivered via the Internet. This enables companies to decrease total cost of ownership saving by up to 90%, reduce implementation risk, decrease time to value and focus on business, not on technology. The value our existing companies have experienced with on-demand computing far exceeds what they can expect with traditional software.

Modular Approach

Seamlessly add other parts of a modular software suite to cover the entire Wholesale process.

Industry Proven

MOST Network Configuration Manager is already installed in a number of customers including MCI, Bellsouth, Telstra UK, TelstraClear, Telecom Egypt, JazzTel and BT Ireland. Prime Carrier's products are proven to deliver cost savings of at least 5%, Margin improvement in the range of at least 2% to 5% and accelerated Return-On-Investment within weeks

MOST Network Configuration Manager has been proven to integrate and operate directly with existing traffic management installations from other vendors. □When interactive switch update functionality is not offered by either another vendor's software or through in-house developed software, MOST Network Configuration Manager can upload the routing plan. This is typically generated in Microsoft Excel which can be uploaded without any change or re-keying of the data and allows exactly the same range of switch management capability to be harnessed as within a complete MOST product environment. This is a further benefit of the true modular approach adopted by the MOST product suite.

For further information on the Prime Carrier products and services, please contact us at

Head Office: +353 (1) 6311900 | **E-mail:** info@primecarrier.com | **Online:** www.primcarrier.com

Copyright © 2003 - 2006 Prime Carrier Limited. All rights reserved. The Prime Carrier logo, AM-BEO name and nCharge is either a registered trademark and/or trademark of Prime Carrier Limited.

This document cannot be reproduced by any means without the written agreement of Prime Carrier Limited. This document and the systems it describes are the intellectual property of Prime Carrier Limited. The information in this document is subject to change without notice. This document is believed to be accurate but Prime Carrier Limited cannot accept responsibility of any inaccuracies, omissions or errors that may appear.